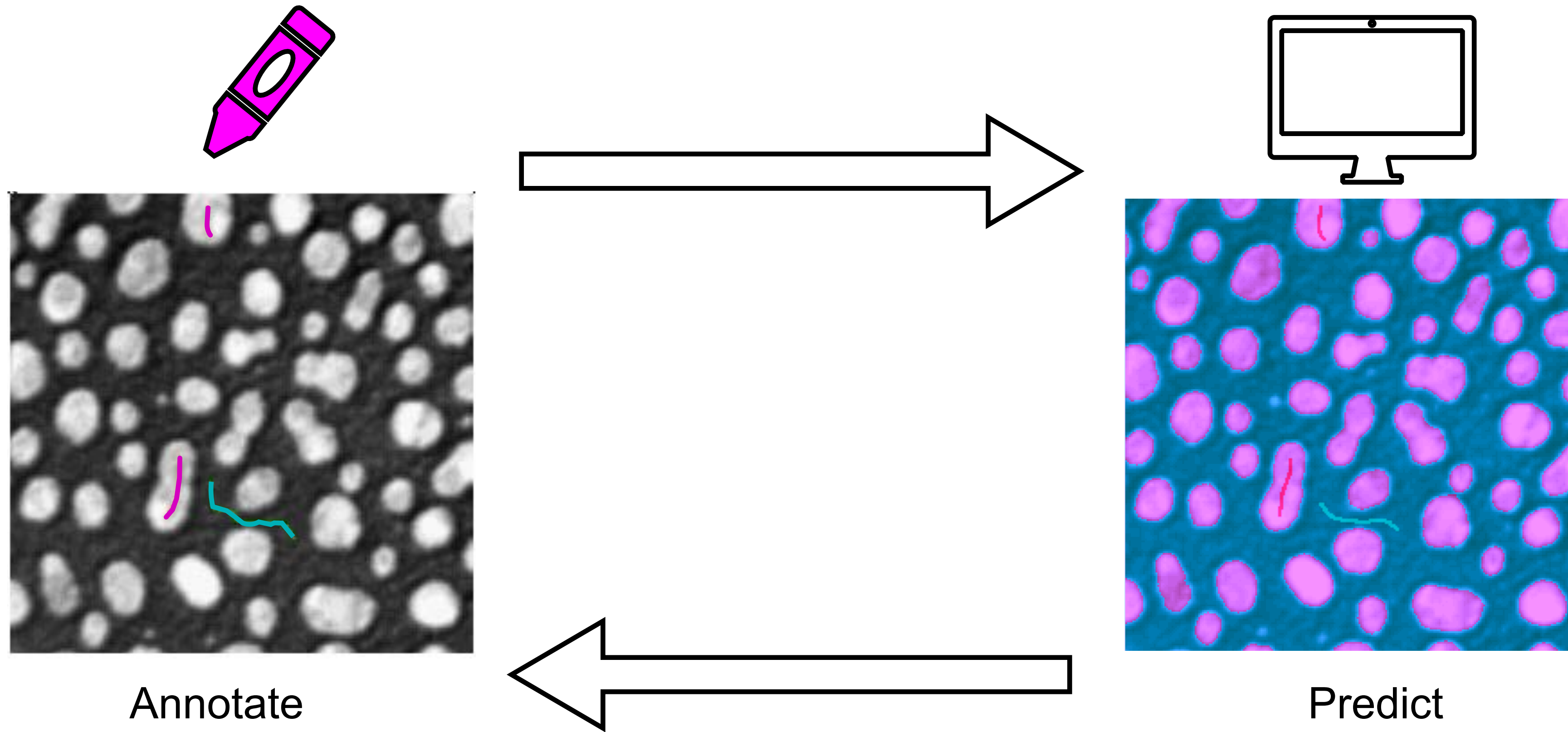


Labkit segmentation



Standalone: Ilastik



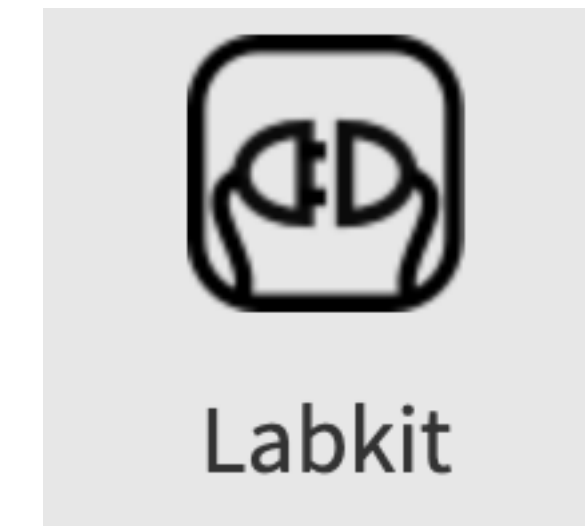
<https://www.ilastik.org/>

For histopathology



<https://qupath.github.io/>

As a Fiji plugin: Labkit



<https://imagej.net/plugins/labkit/>

Labkit Segmentation

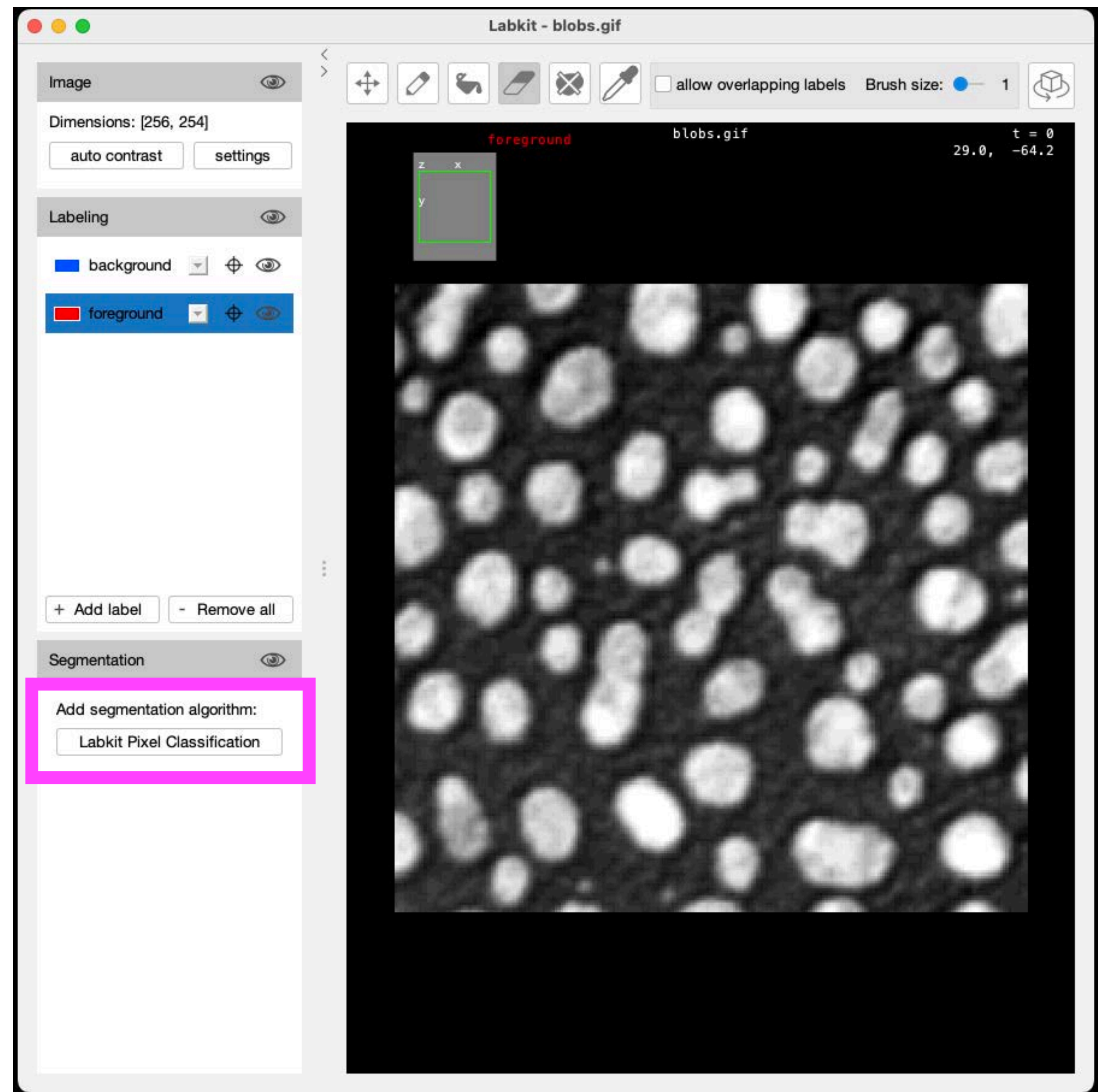
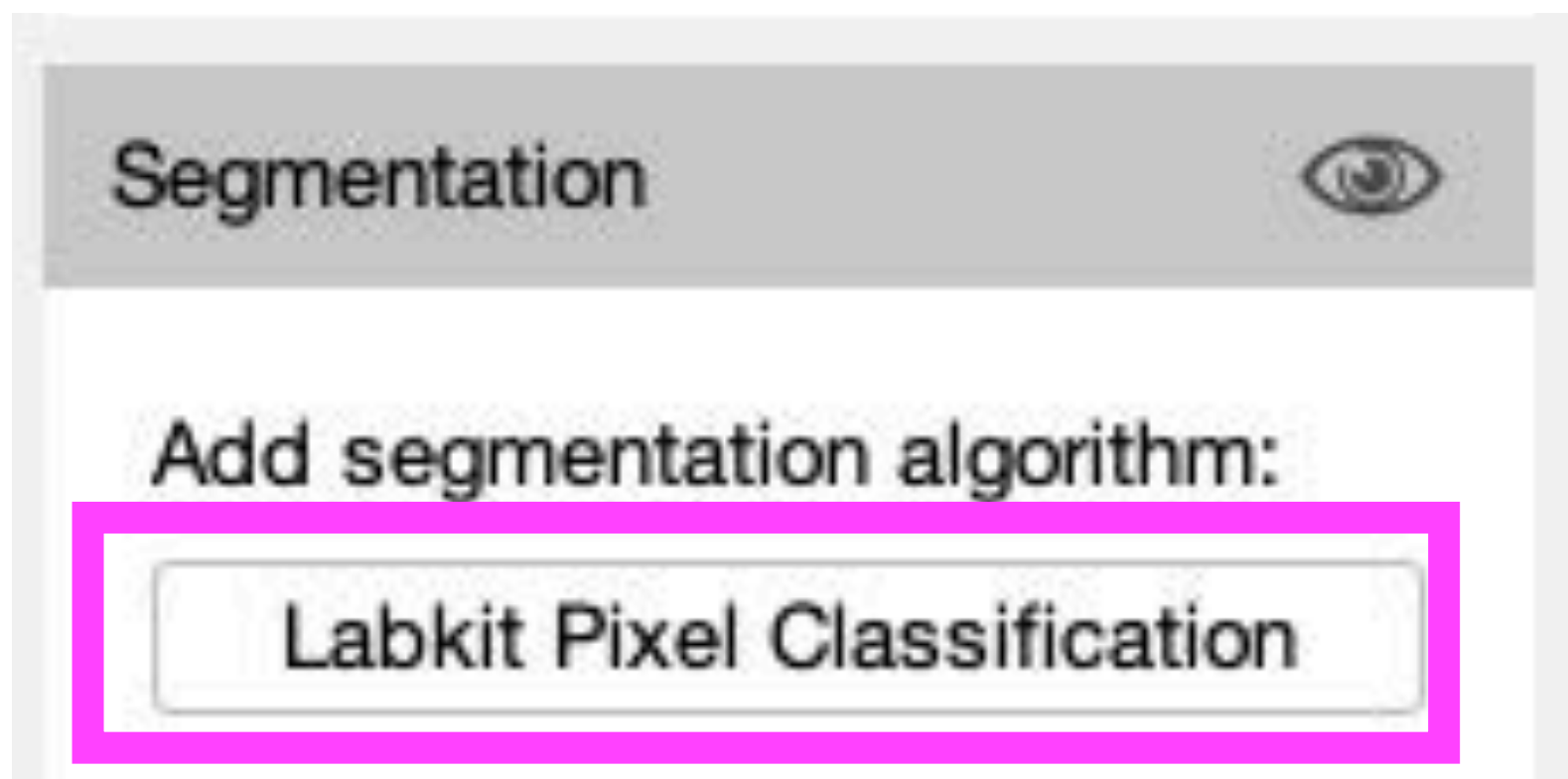


in **Fiji**:

Plugins

> **Labkit**

> Open Current Image With Labkit



Labkit Segmentation

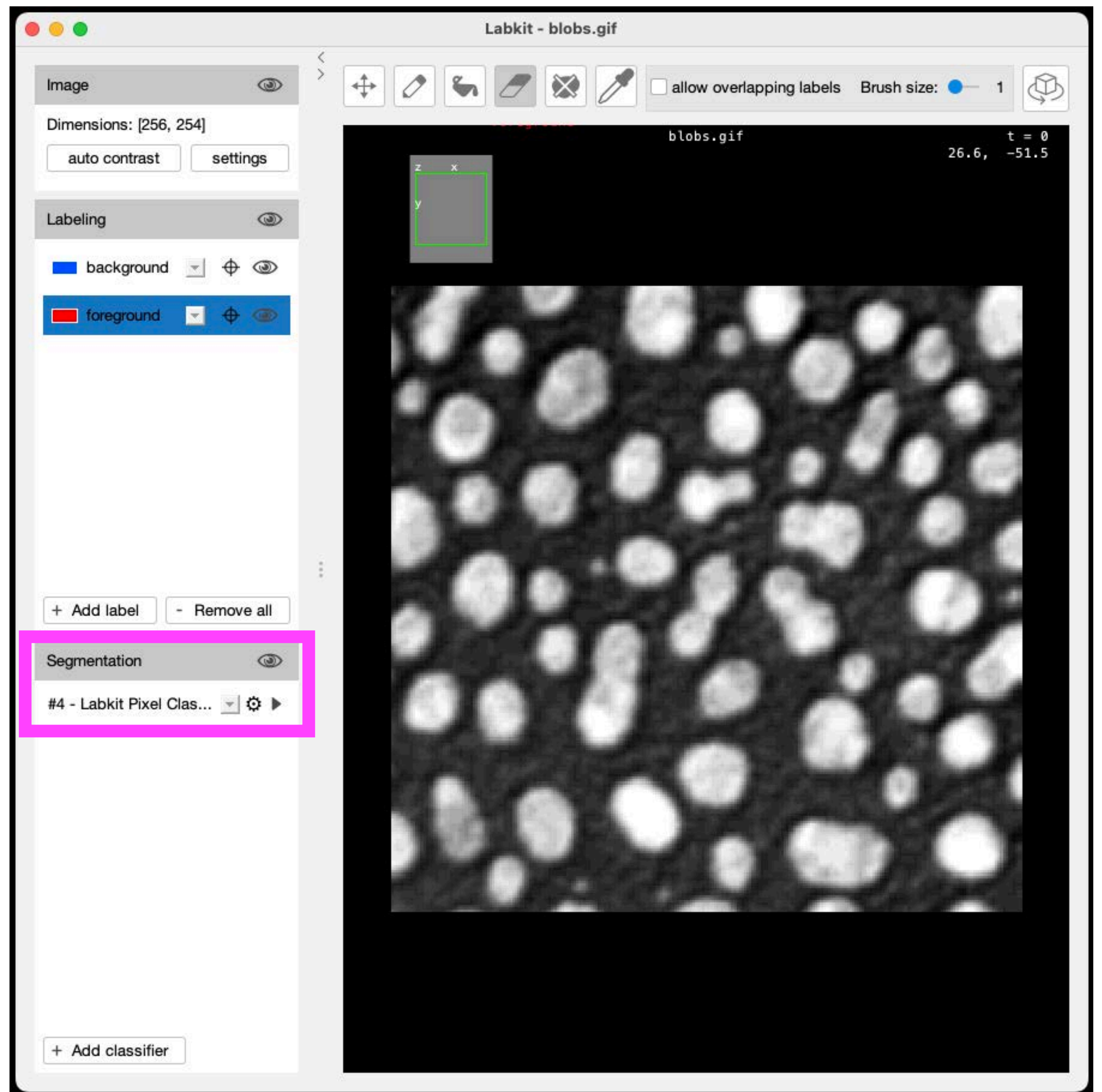
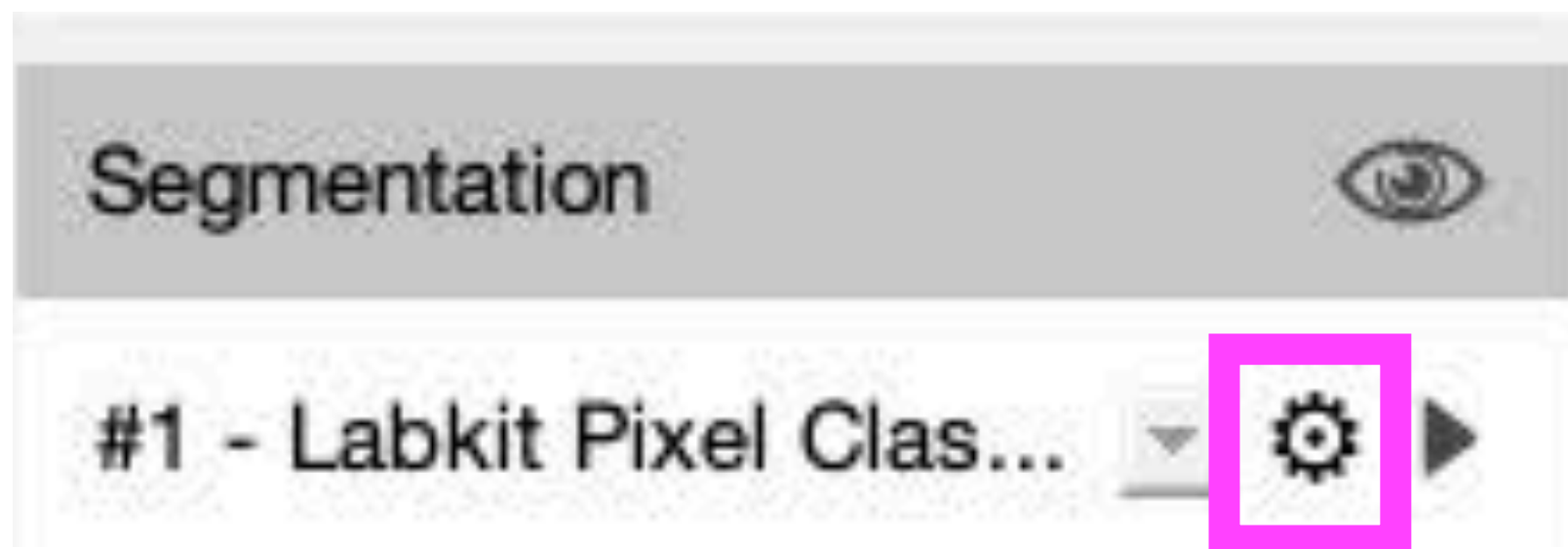


in **Fiji**:

Plugins

> **Labkit**

> Open Current Image With Labkit



Labkit Segmentation

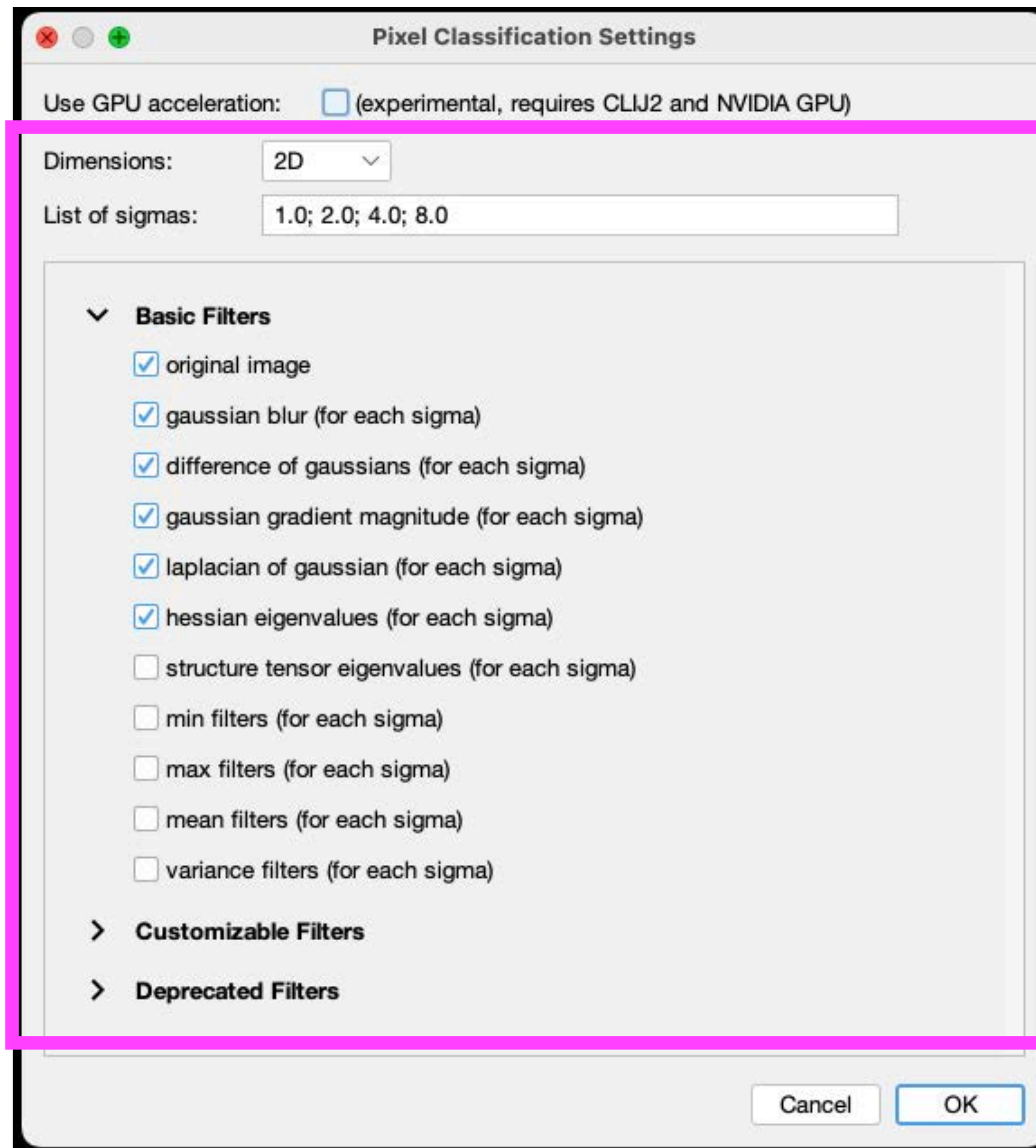
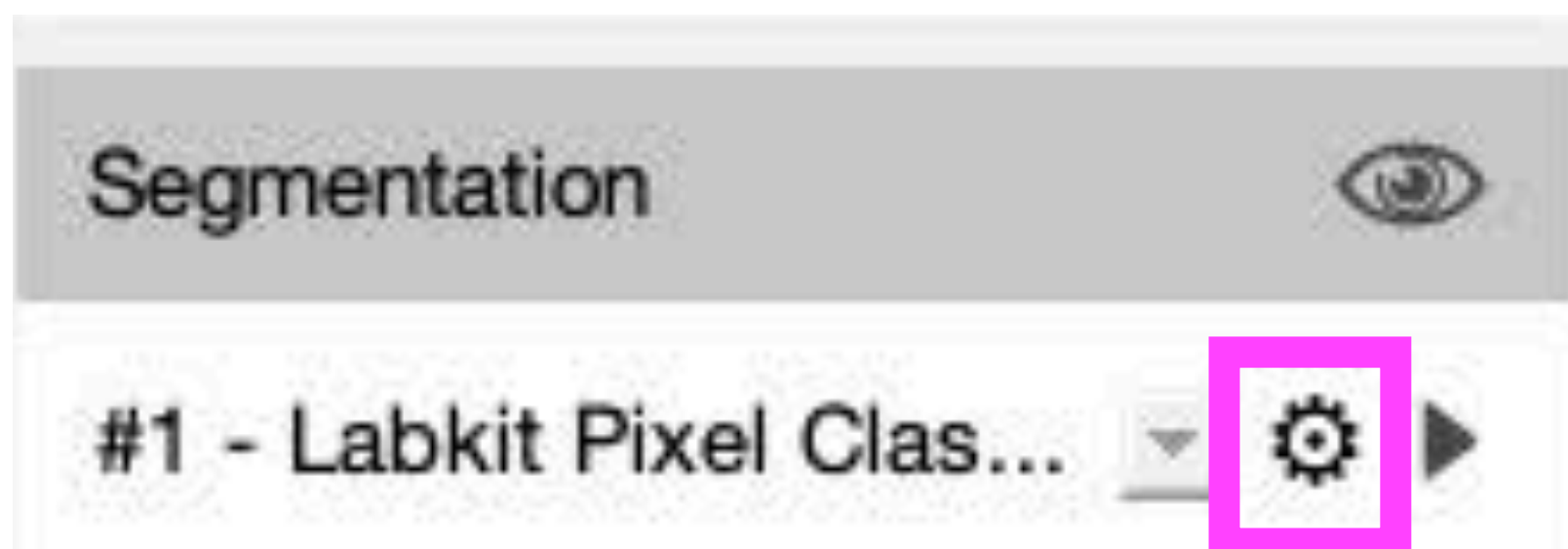


in Fiji:

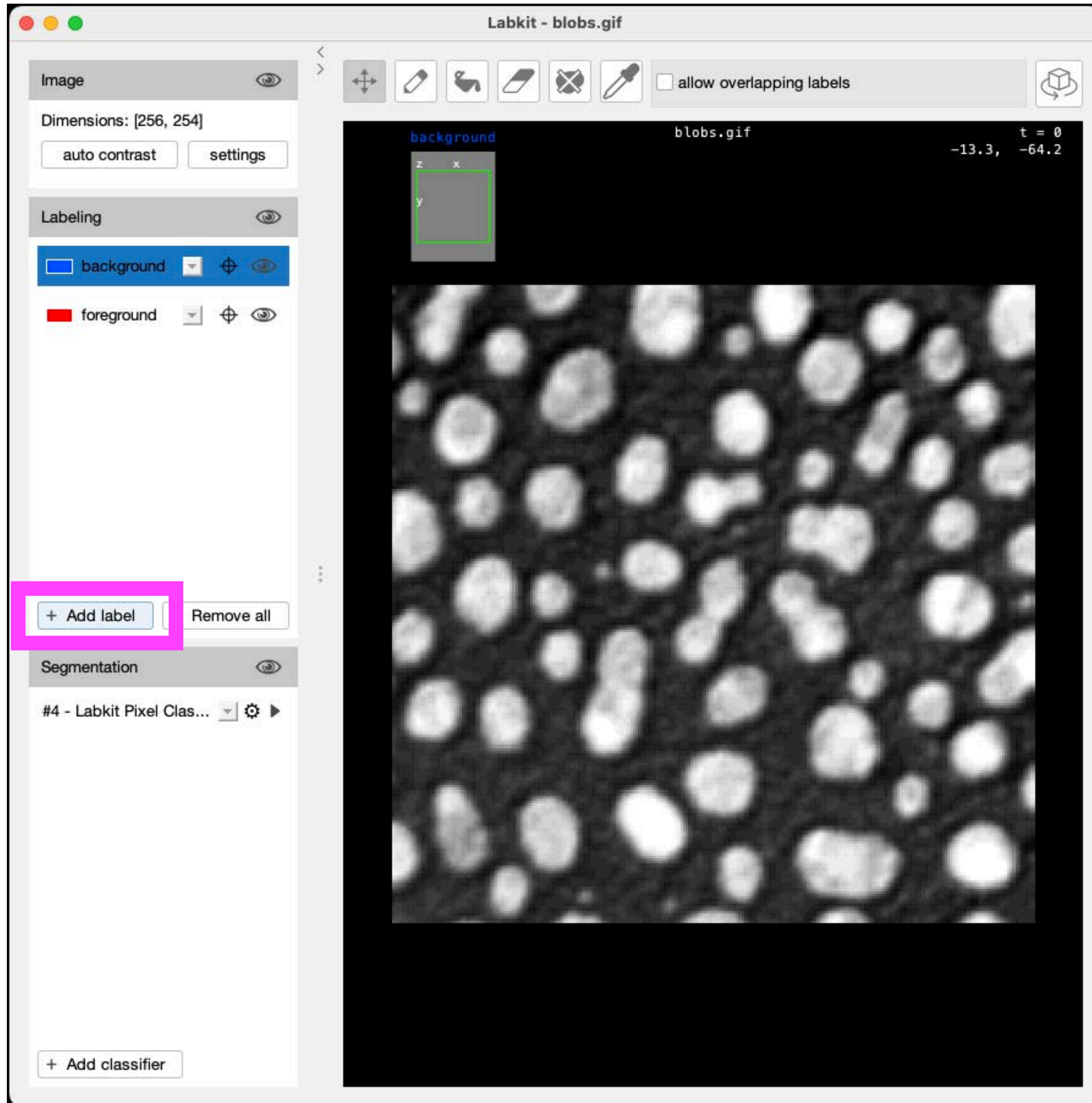
Plugins

> **Labkit**

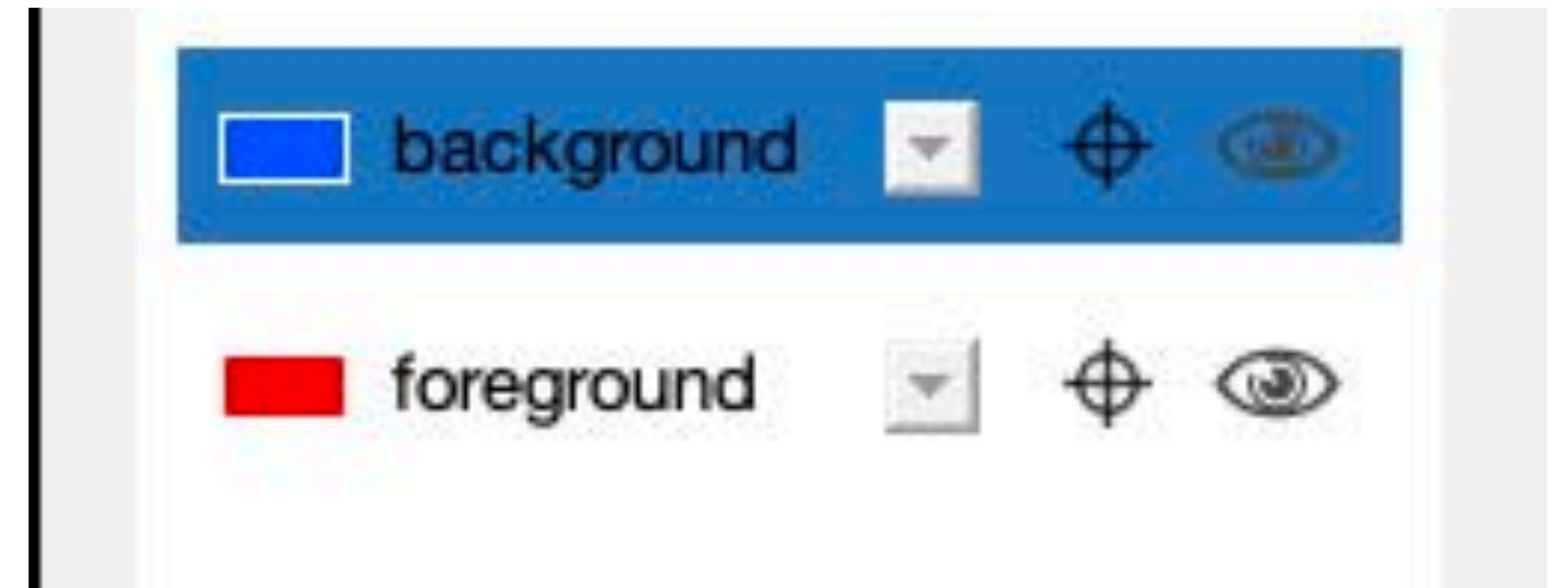
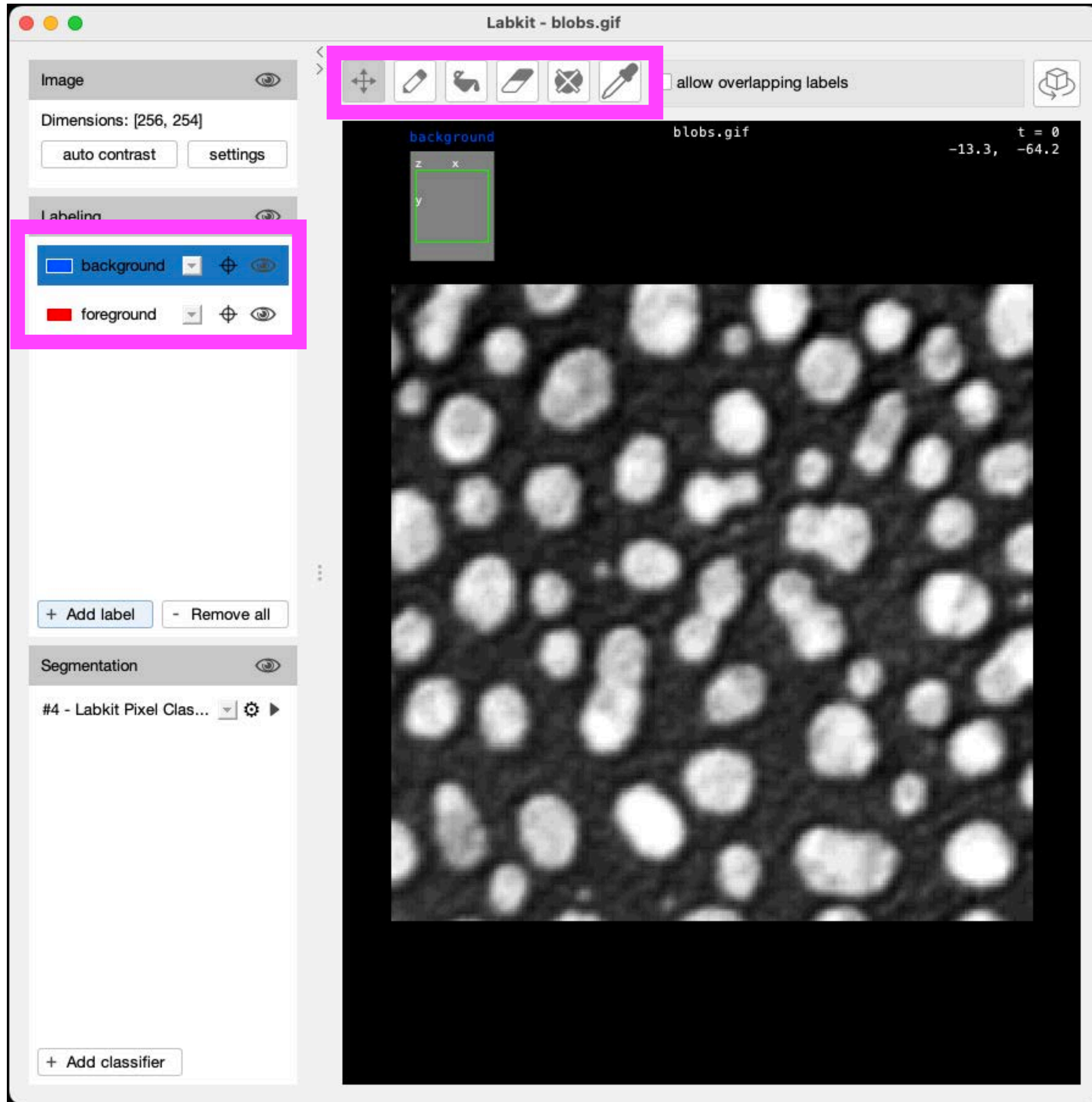
> Open Current Image With Labkit



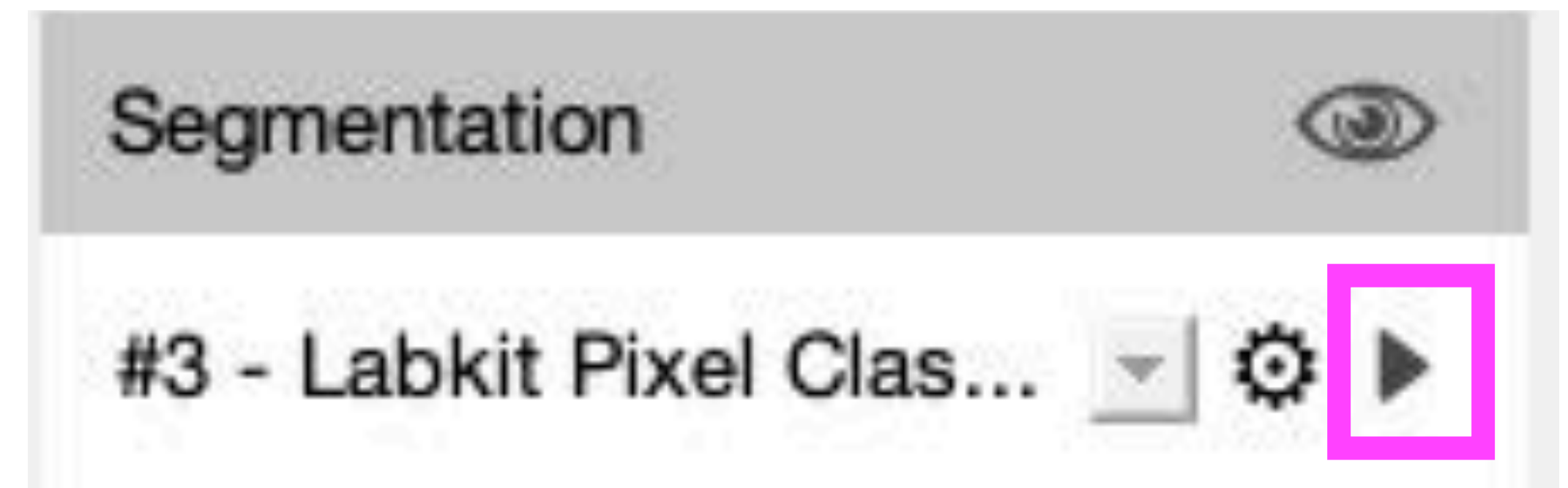
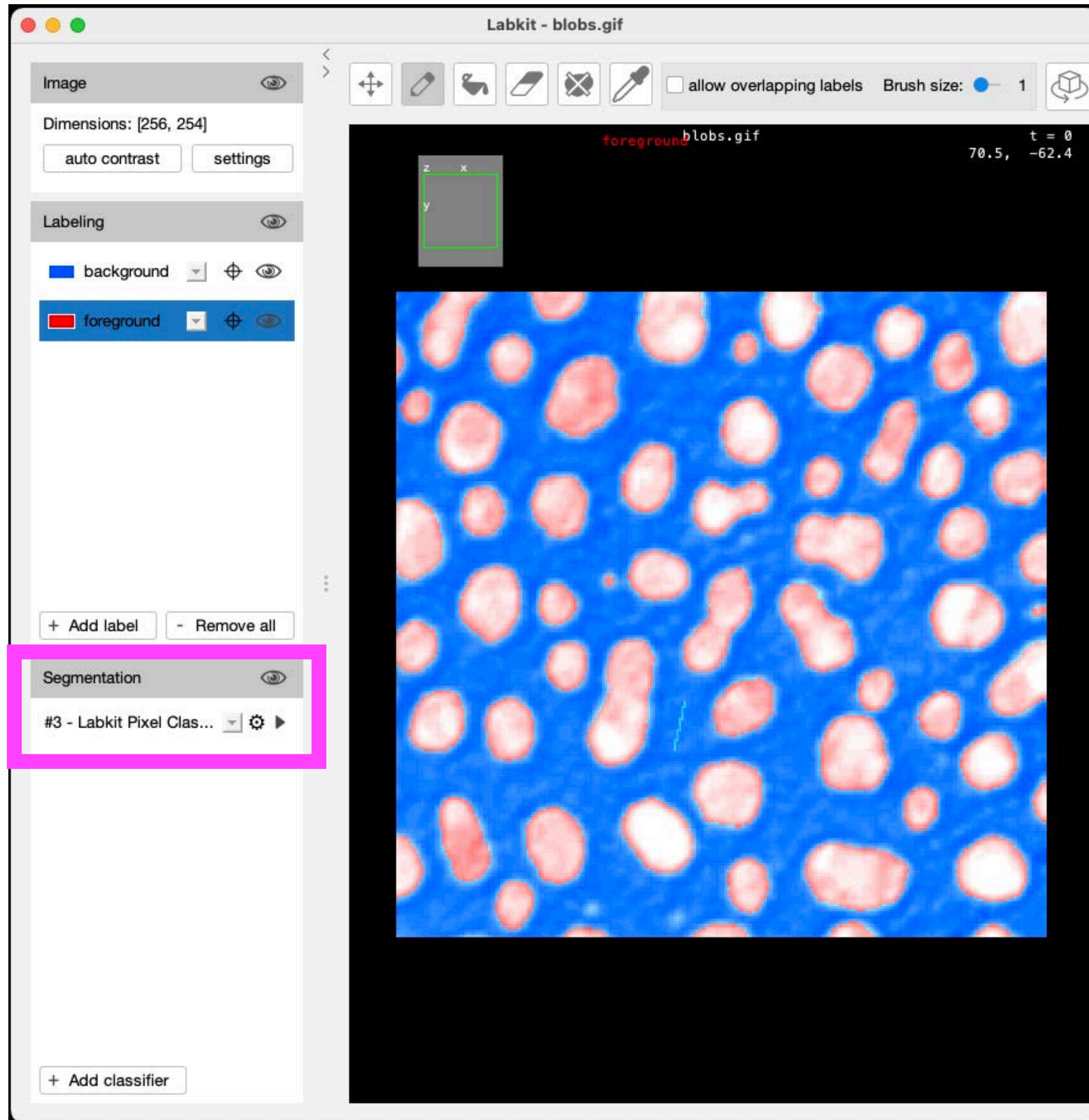
Labkit Segmentation



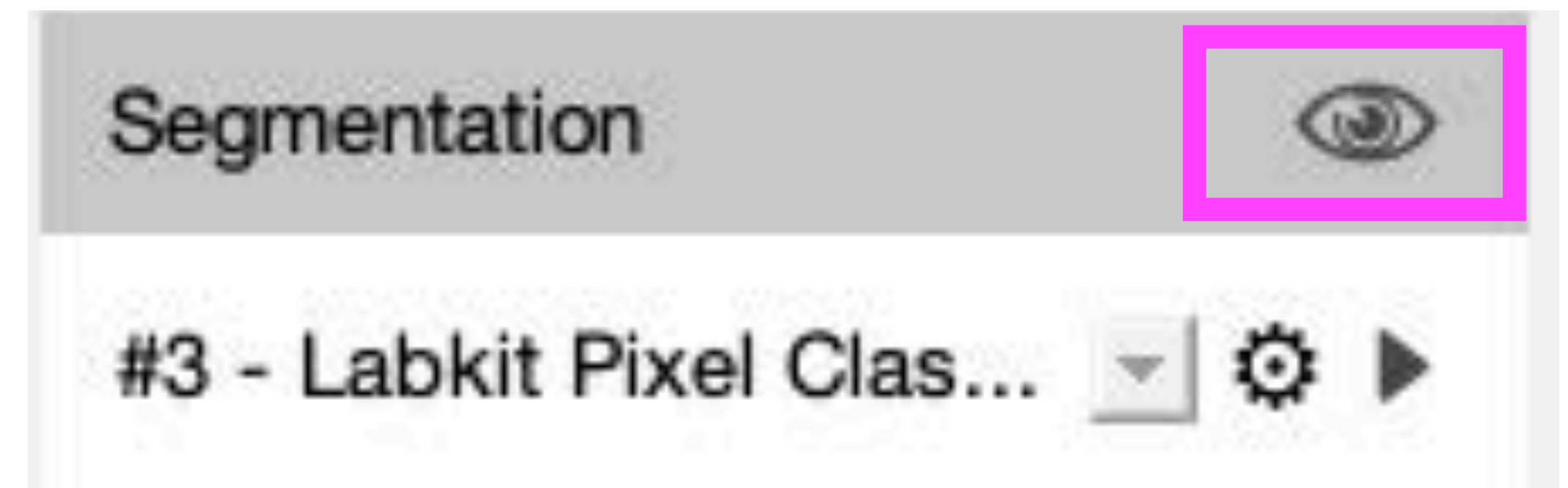
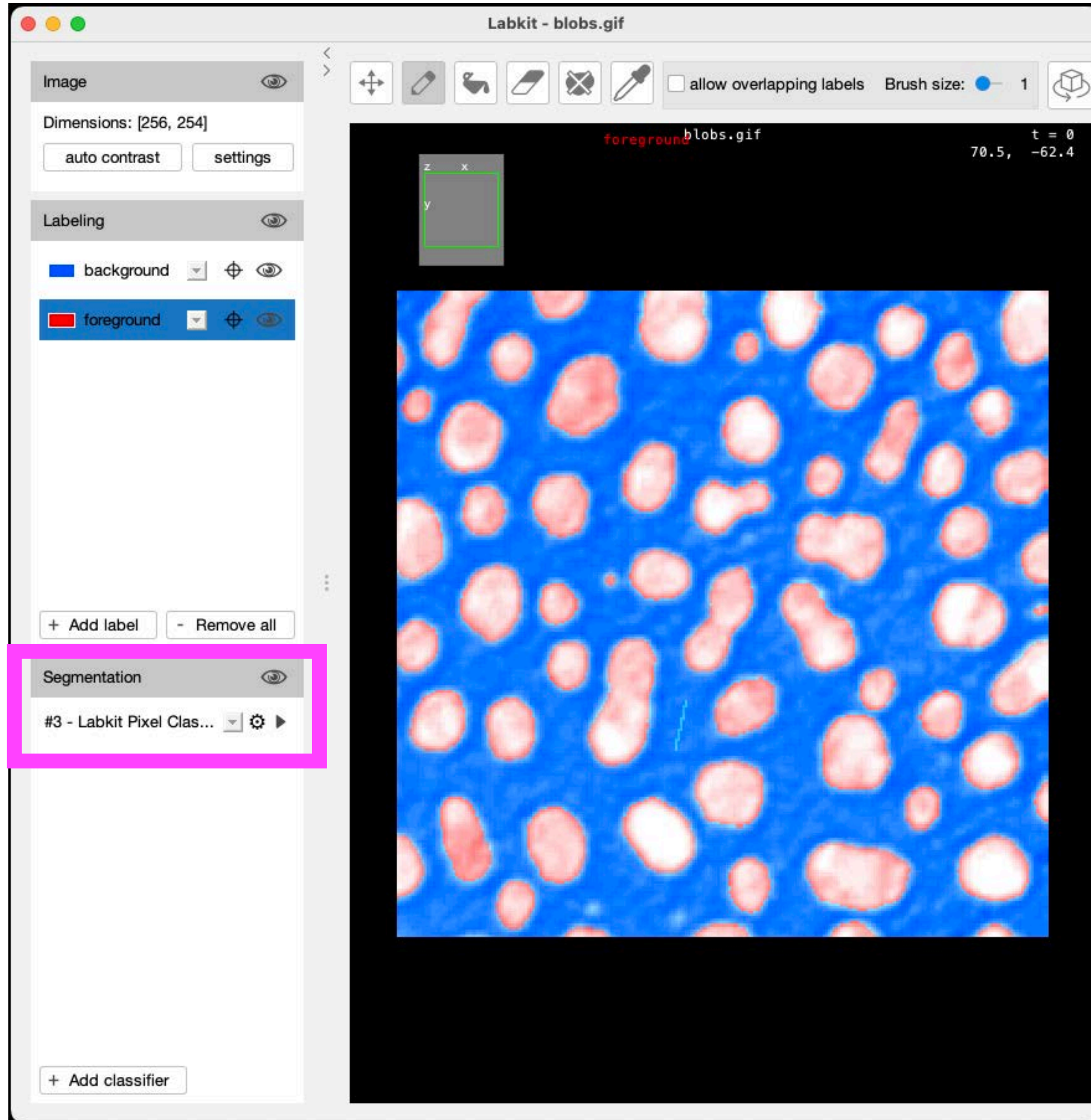
Labkit Segmentation

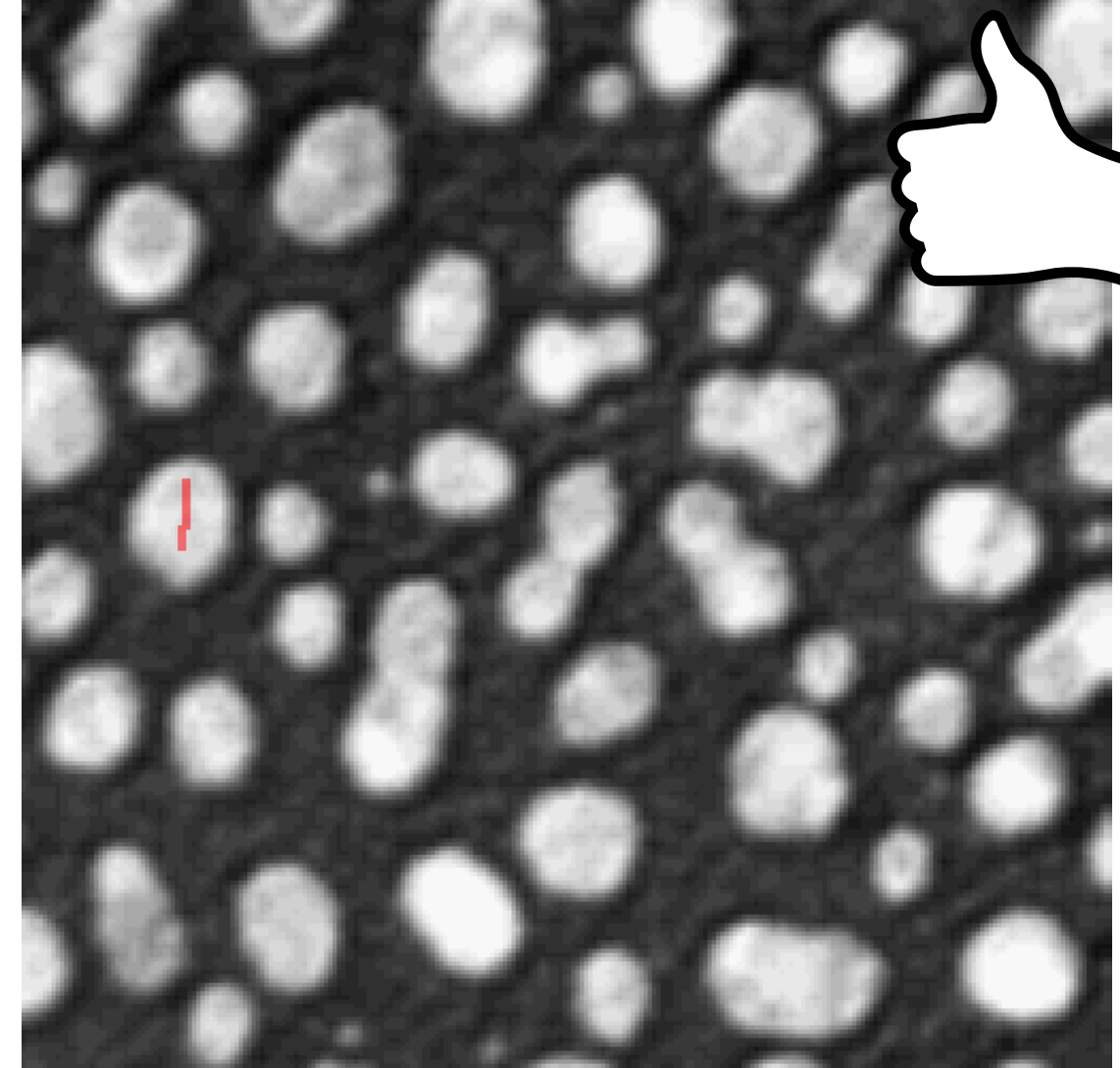
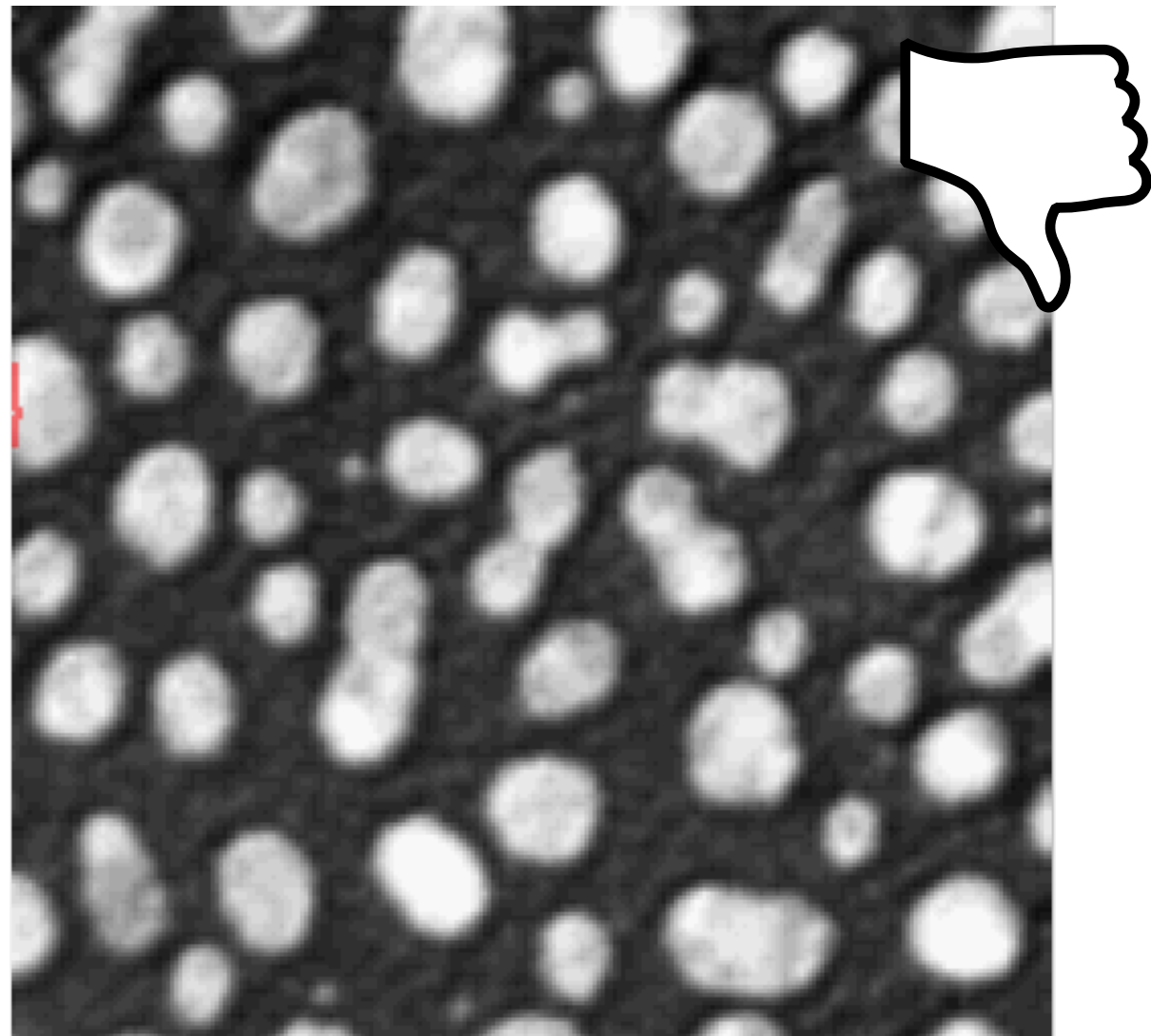
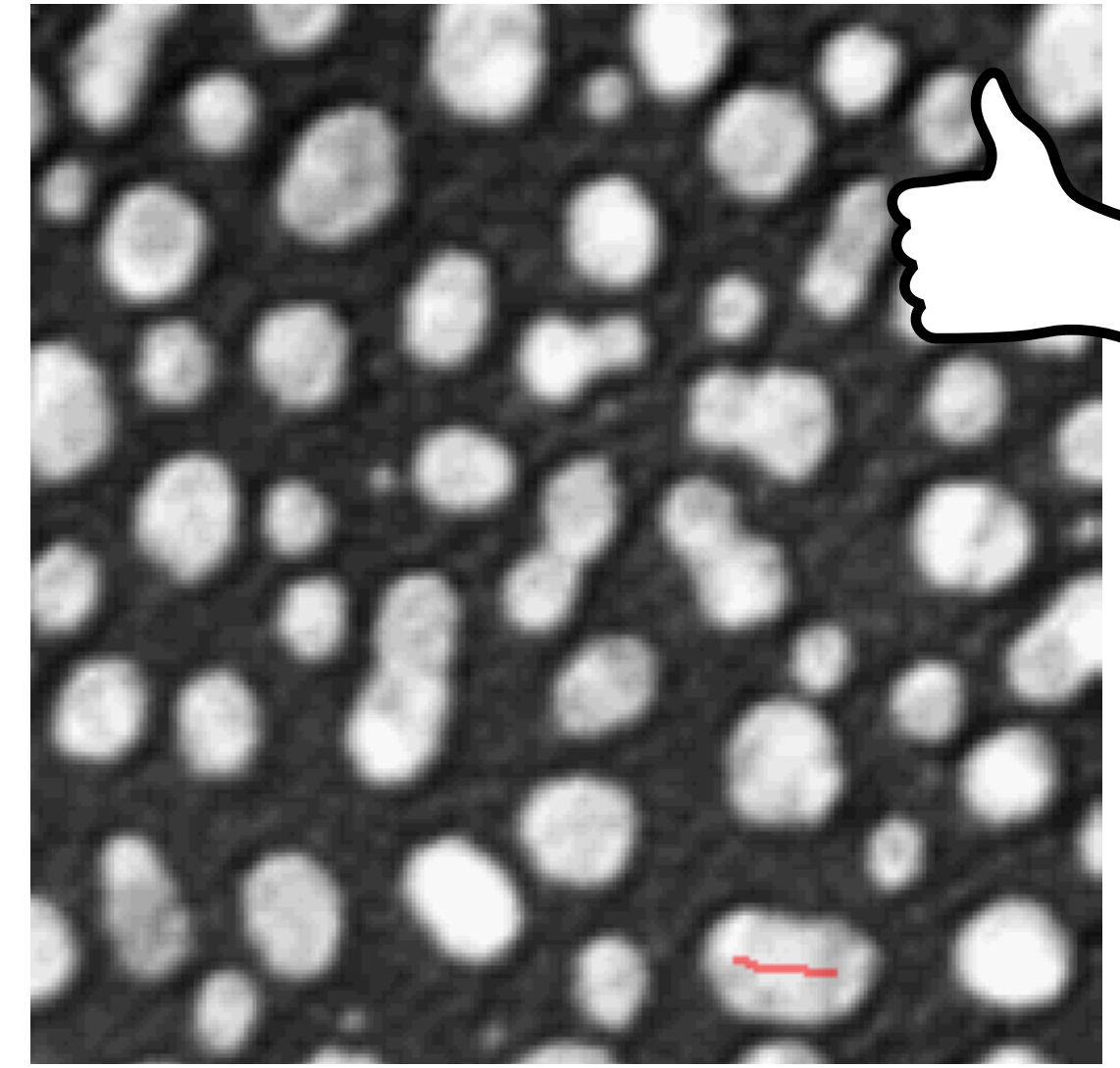
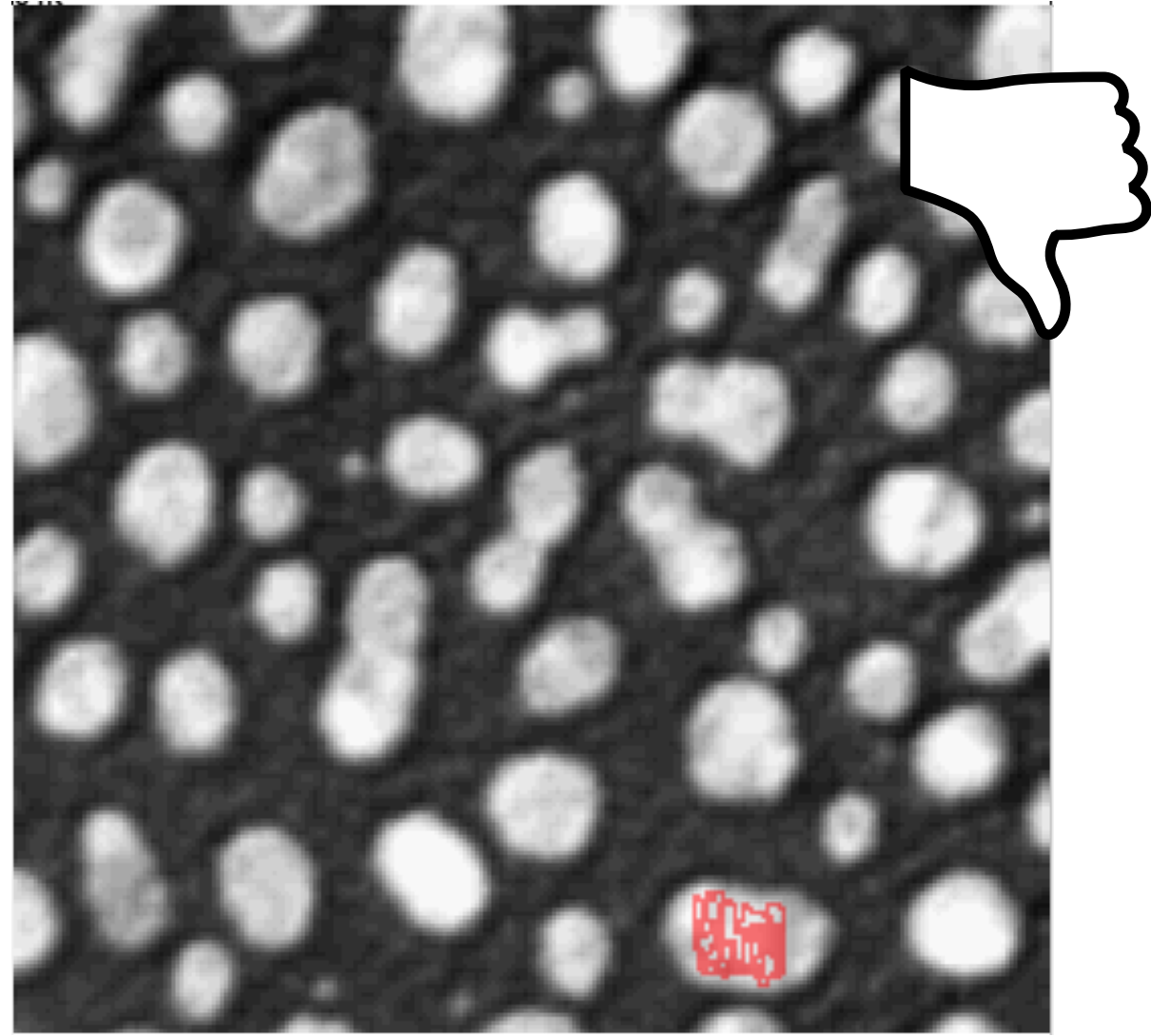


Labkit Segmentation



Labkit Segmentation







4.3 DAPI segmentation with Labkit

Breakpoint at 12: Create results