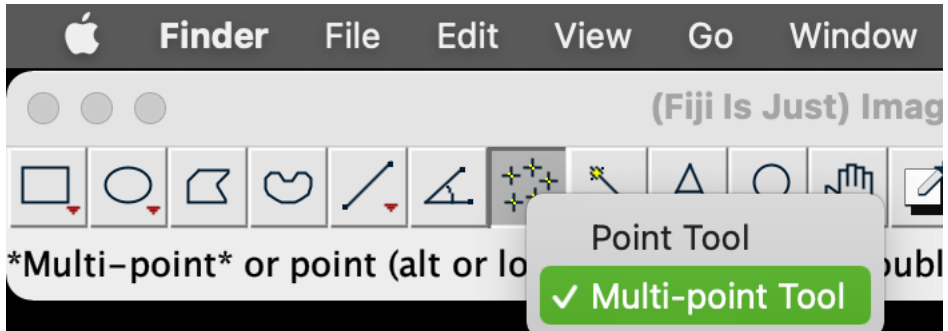


Spot Detection (Point tool and Find Maxima)

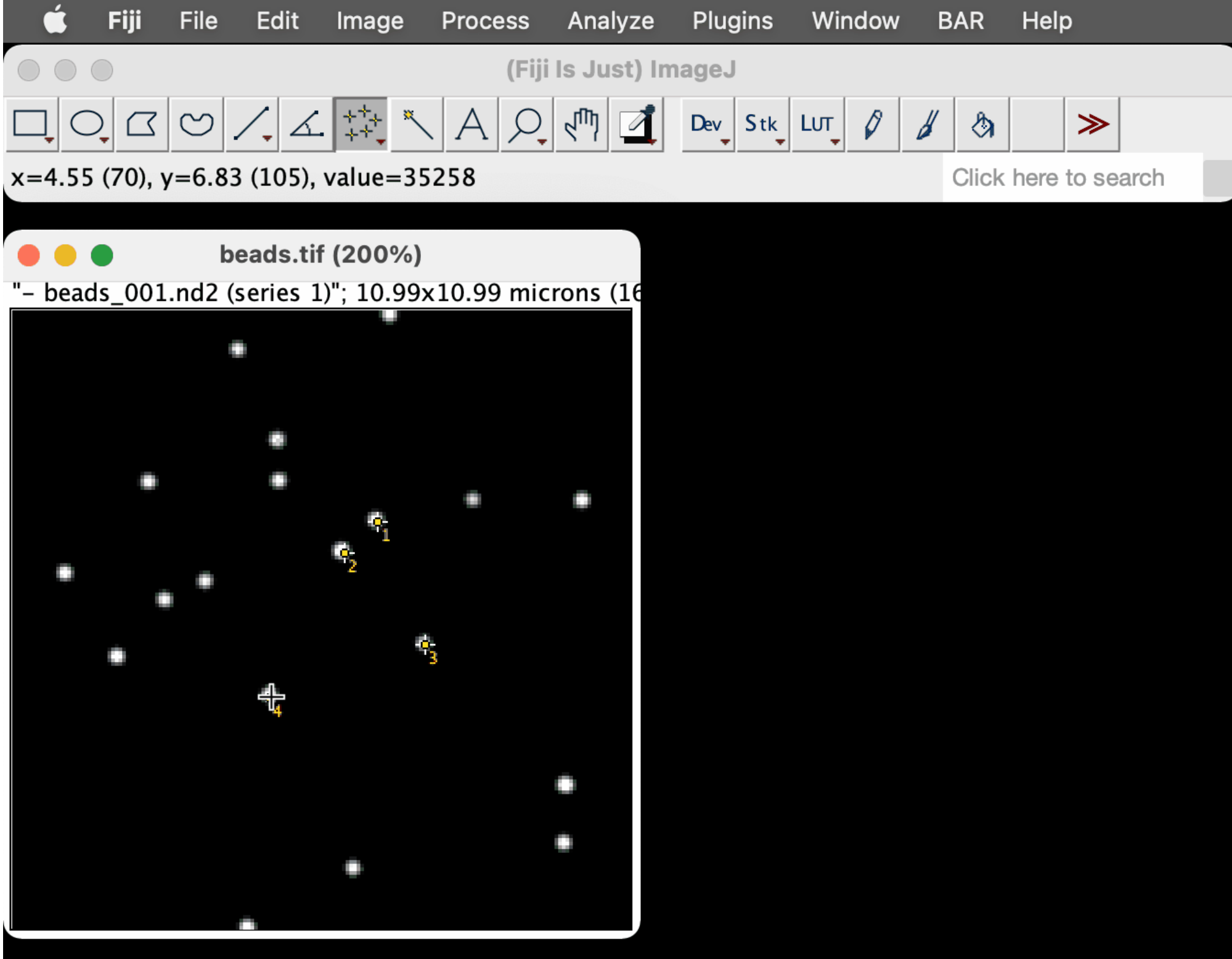
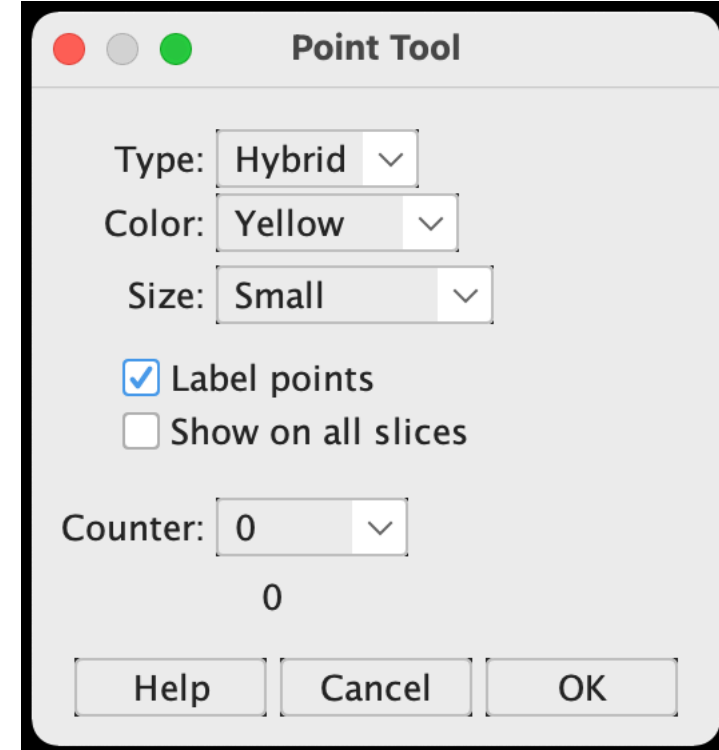
Point and Multi-Point tool

Select and Measure multiple points

Mouse right-click



Mouse double-click



to clear all points:

Edit > Selection > Select None *

(cmd) + shift + a

to measure all points:

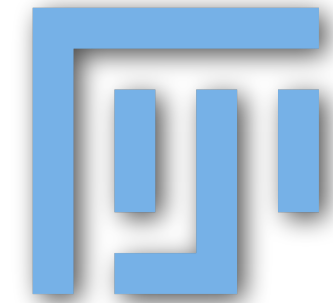
Analyze > Measure **

(cmd) + m

to add point selection to ROI Manager:

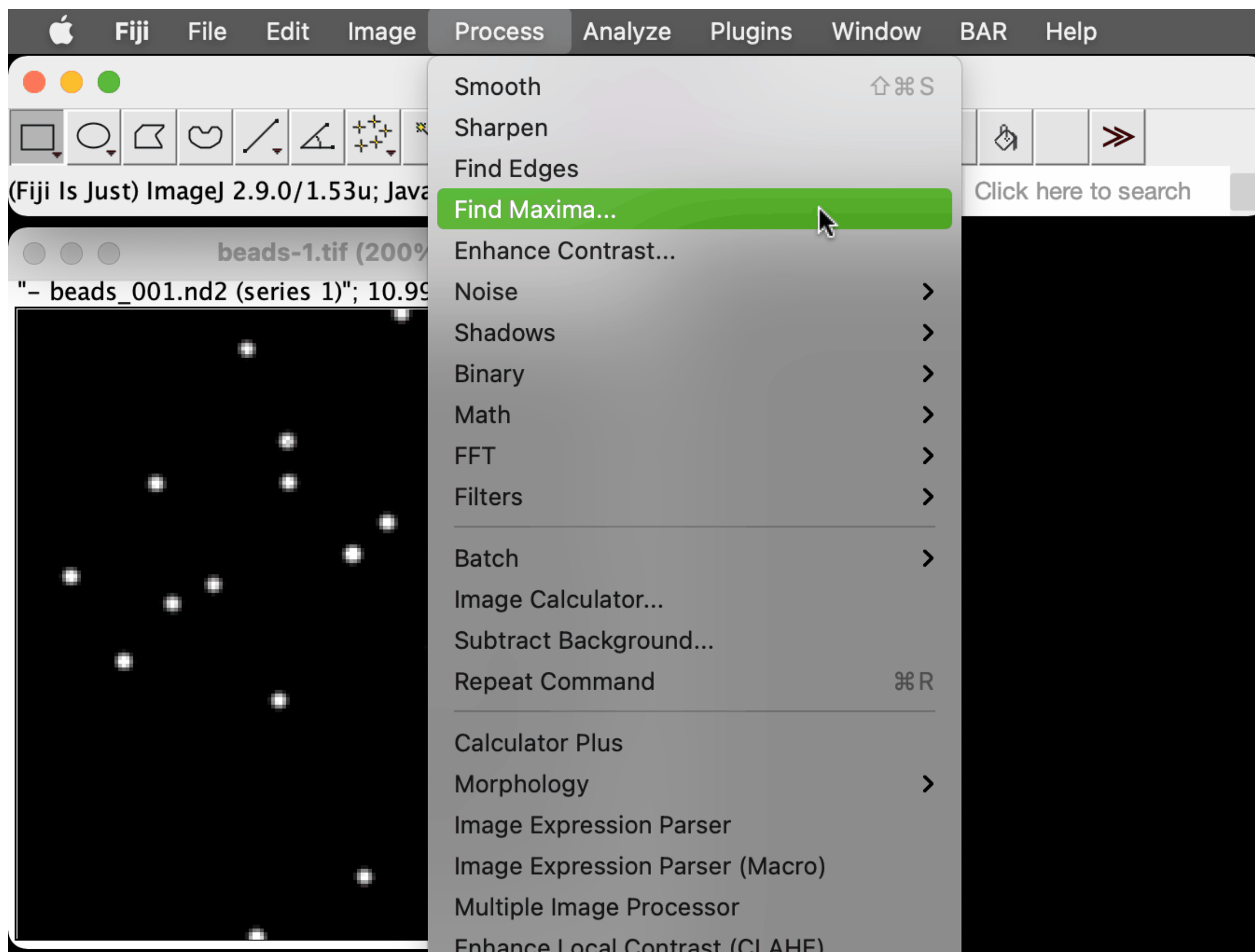
†

*you can also toggle the "Show all" checkbox in the ROI Manager. **you can also use the "Measure" button in the ROI Manager.

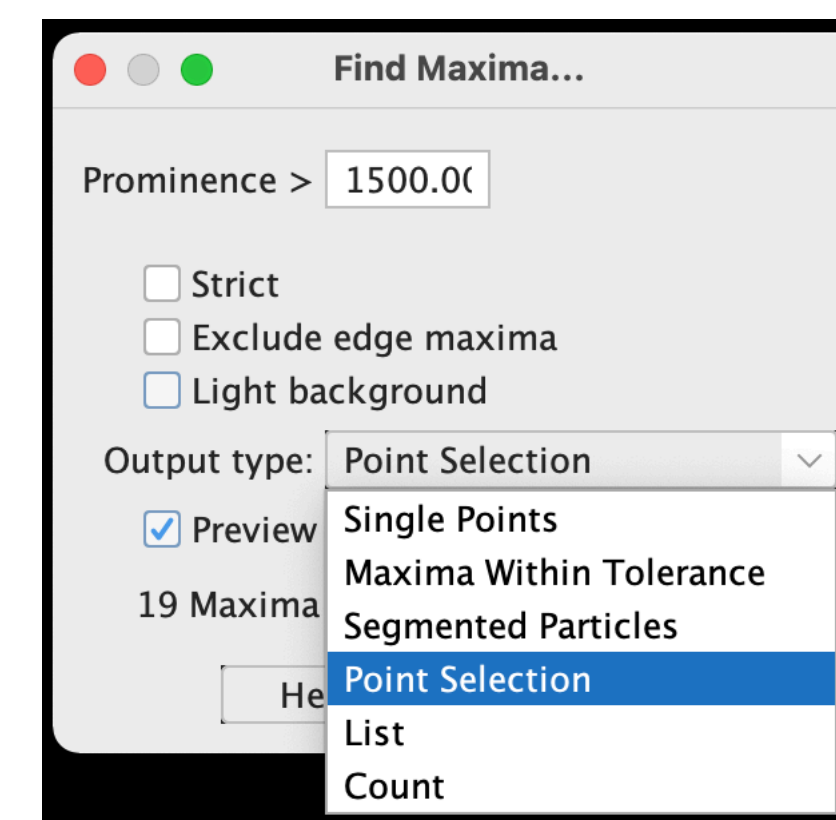


Point and Multi-Point tool

Select and Measure multiple points



Process > Find Maxima...



Segmentation with pixel based classifier—exercises



8.1 manual spot detection

8.2 algorithmic spot detection

8.3 automatic spot detection with thresholding

8.4. ... with noise

8.5. ... with variable background

Further Learning (<https://iac.hms.harvard.edu/resources/>)



image.sc

Forum: Knowledge exchange and support

- <https://forum.image.sc/>



Online book with code: Introduction to Bioimage Analysis

- <https://bioimagebook.github.io/>



Online training: NEUBIAS Academy

- <https://eubias.org/NEUBIAS/training-schools/neubias-academy-home/>
- <https://www.youtube.com/c/NEUBIAS>



Fiji manual from Monash University

- https://bridges.monash.edu/articles/educational_resource/Fiji_Training_Manual_v6_4_/20033513



BioImaging
North America

BioImaging North America (BINA)

- <https://www.bioimagingnorthamerica.org/>